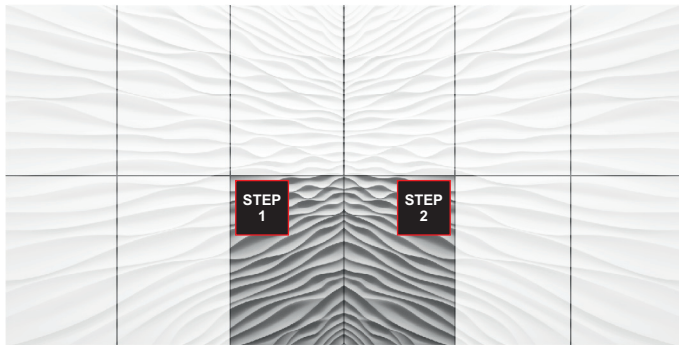


1

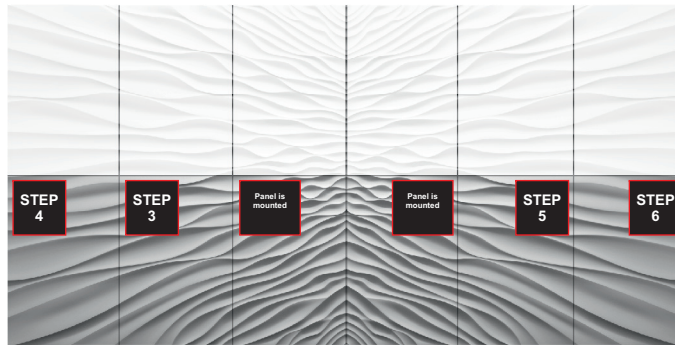
SEQUENCE ON INSTALLATION 1



The sequence of unpacking and installing Illusion model. Open the box, take two first panels from the wooden box and mount them at the wall. Keeping recommended sequence, will guarantee the optimal effect of installation. Keep this sequence while installing at the wall.

2

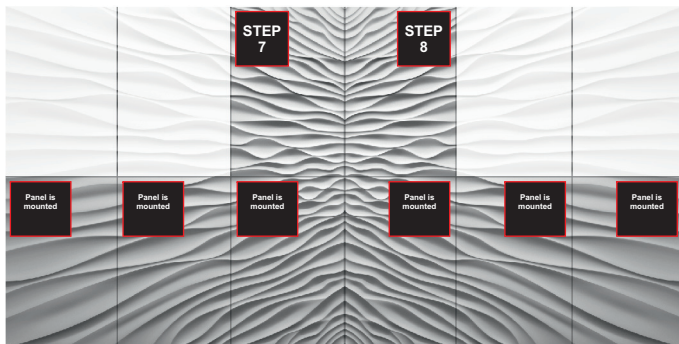
SEQUENCE ON INSTALLATION 2



Secondly, we install panels at the wall in sequence: 3, 4 and 5, 6.

3

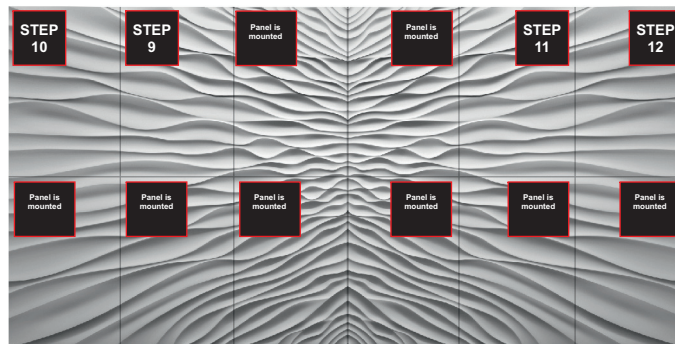
SEQUENCE ON INSTALLATION 3



Next we mount number 7 and 8.

4

SEQUENCE ON INSTALLATION 4



The final step of installation is to mount panels 9, 10 and 11, 12. After mounting, next day you can fill joints, cleaning, painting and that's all :-)

We wish the successful installation



DECORATIVE WALL PANELS
www.loftsystem.com



Genuine product with certificate
of authenticity



MuralTM by LOFT DESIGN SYSTEM